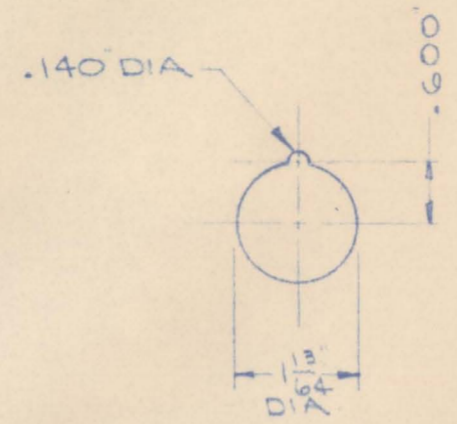


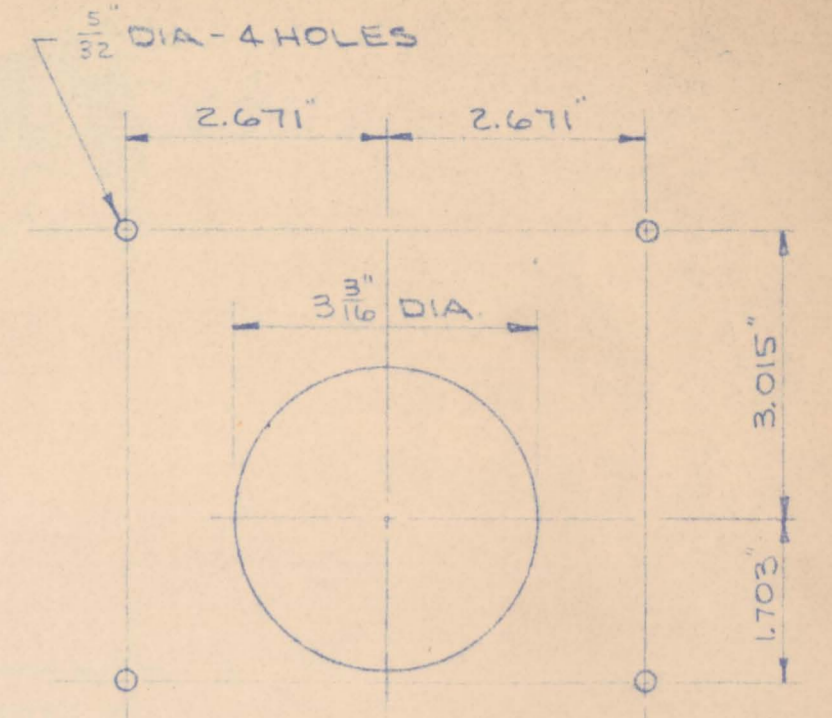
FRONT VIEW - CUTOUTS  
SCALE: 1/2" = 1'-0"

- NOTES:
1. FRAMEWORK DETAILS MAY BE ALTERED IF NECESSARY TO FACILITATE CONSTRUCTION.
  2. DOOR CONSTRUCTION DETAILS & HARDWARE TO BE AS RECOMMENDED BY PANEL MFR.
  3. PANEL EXTERIOR TO BE SANDED, FILLED & PAINTED WITH AUTOMOTIVE TYPE FINISH, COLOR TO BE SPECIFIED. PANEL INTERIOR TO BE PAINTED WITH ONE COAT OF FLAT WHITE LACQUER.

1/16" DIA. HOLE - 13 REQ'D.

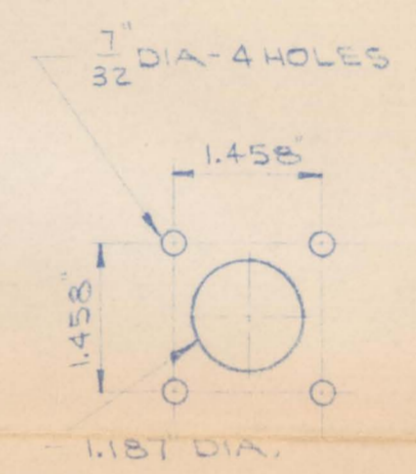


CUTOUT C  
SCALE: HALF SIZE  
5 REQ'D

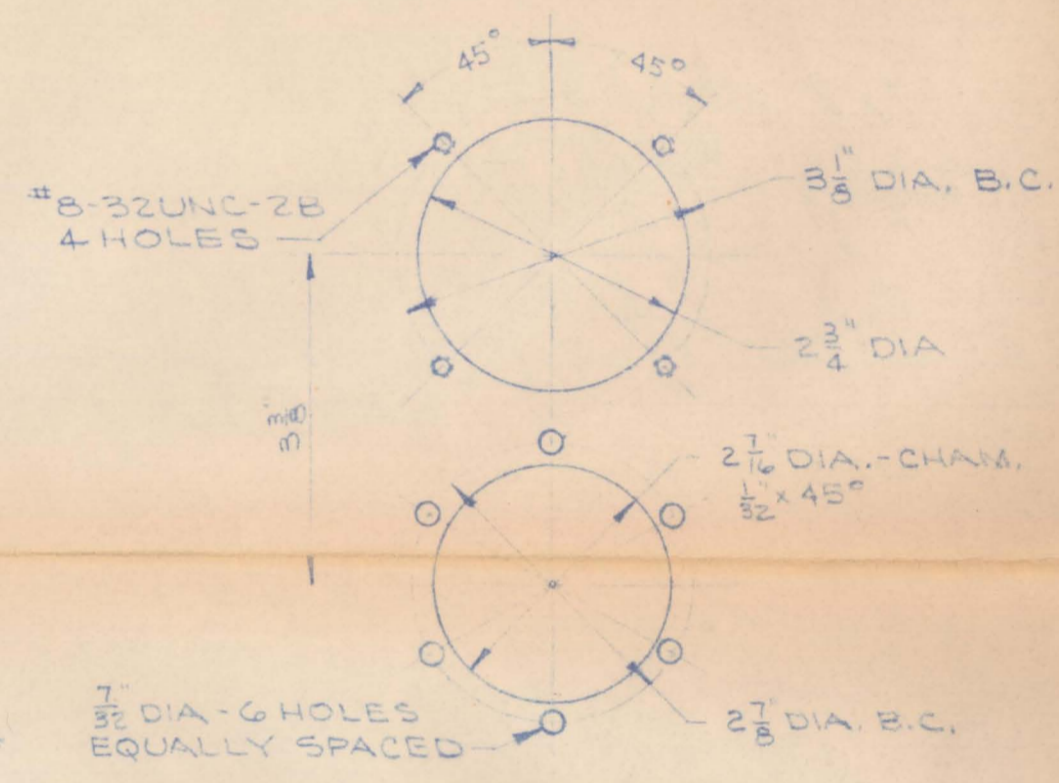


CUTOUT D  
SCALE: HALF SIZE  
4 REQ'D.

QUARTER TURN TYPE CATCH  
CONT. PIANO HINGE

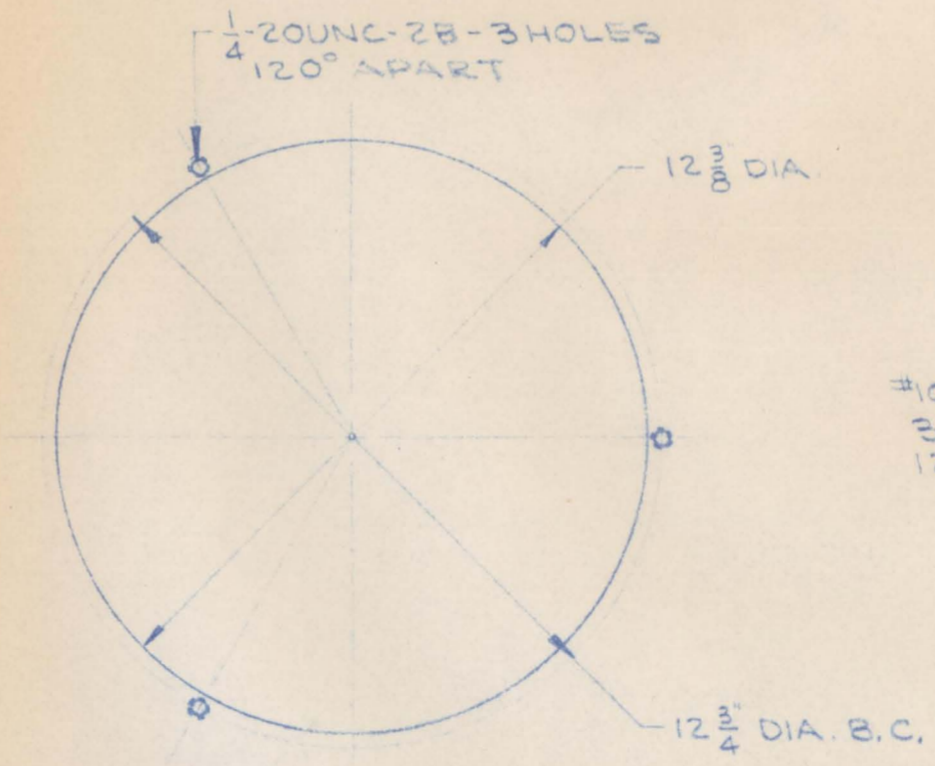


CUTOUT E  
SCALE: HALF SIZE  
1 REQ'D.

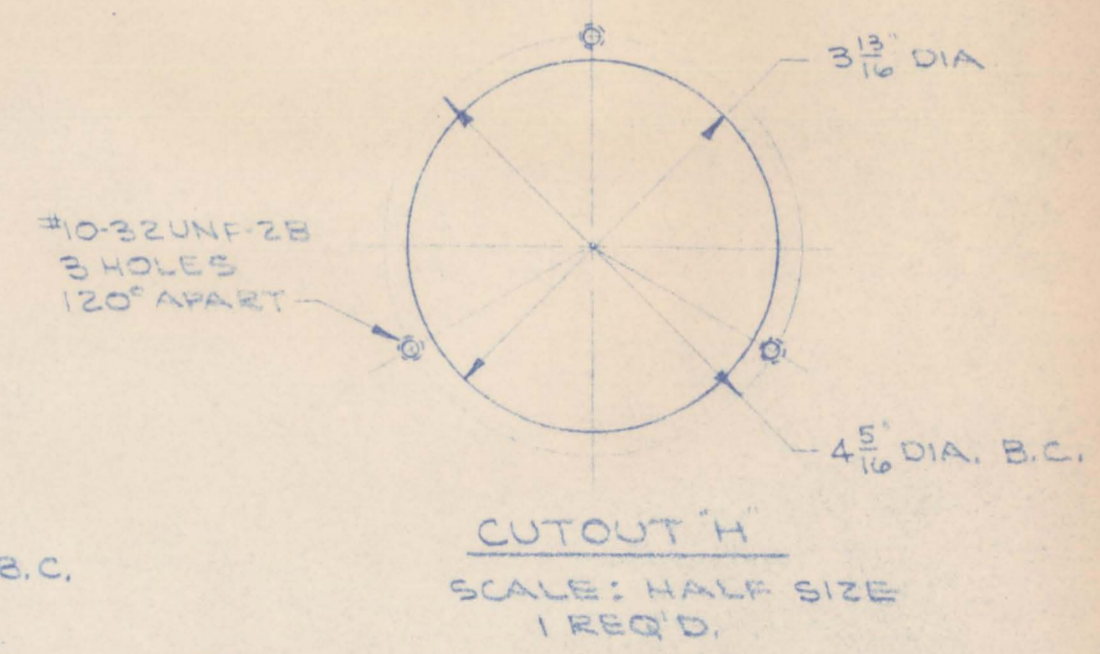


CUTOUT F  
SCALE: HALF SIZE  
1 REQ'D.

HINGED DOOR  
MINIMUM SIZE  
OPENING 3 1/4" x 23 1/2"



CUTOUT G  
SCALE: QUARTER SIZE  
1 REQ'D.



CUTOUT H  
SCALE: HALF SIZE  
1 REQ'D.

UNLESS OTHERWISE SPECIFIED  
TOLERANCE: FRACTIONS \_\_\_\_\_, DECIMALS \_\_\_\_\_  
BREAK SHARP CORNERS AND EDGES \_\_\_\_\_ ALL OVER.  
SURFACE FINISH \_\_\_\_\_ ALL OVER.

|               |                   |
|---------------|-------------------|
| REV. $\Delta$ | REF. No. $\Delta$ |
| REV. $\Delta$ | REF. No. $\Delta$ |
| REV. $\Delta$ | REF. No. $\Delta$ |



McCARTNEY MFG. CO.  
BAXTER SPRINGS KANSAS

HYDRAULIC CONTROL PANEL  
CONSTRUCTION DETAILS

|                          |                |               |
|--------------------------|----------------|---------------|
| SCALE NOTED              |                | DATE 12-12-63 |
| MATL                     | HEAT TREAT     | DWG. LEP      |
|                          | PART No.       | APPRD.        |
| CATALOG No. SHEET 1 OF 3 | DWG. No. C-571 |               |